

# Lysander-Canso U.S. Corporate Value Bond Fund (USD) – Series F

Fund Code: LYS808F

Portfolio Manager: Canso Investment Counsel Ltd.

As of: December 31, 2025

Asset Class: Fixed Income

CIFSC Category: Global Corporate Fixed Income

Benchmark: ICE BofA U.S. Corporate Master Total Return Index<sup>1</sup>



## Investment Focus

The Fund invests primarily in U.S. debt and money market securities either denominated in U.S. dollars or hedged to U.S. dollars and is unrestricted across all credits.

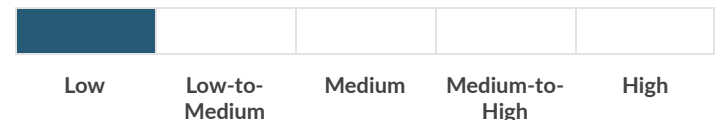
## Why Invest in this Fund?

Established in 1997, Canso Investment Counsel Ltd. is an independent firm focused on bottom-up security selection and fundamental credit research.

Canso utilizes its proprietary Maximum Loss analysis as a risk management tool to size positions while maintaining concentrated portfolios with high conviction in their best ideas.

This independent credit expertise and investment management experience enables Canso to buy securities when they are out of favour and priced at a discount to their intrinsic value.

## Risk Rating



- **USD Denominated Income Solution** – US dollar denominated fixed income fund focused on long term capital growth.
- **Adaptable to Market Conditions** – Portfolio is unconstrained from both a duration and credit perspective, allowing Canso the flexibility to position the portfolio according to market conditions. Mandate is benchmark agnostic.
- **Extensive Investment Management Expertise** – Large investment team with experienced credit specialists with expertise in determining default risks and recovery values of issuers to identify corporate bond opportunities. The continuity of the team has contributed to the successful management of investor portfolios over different market cycles.

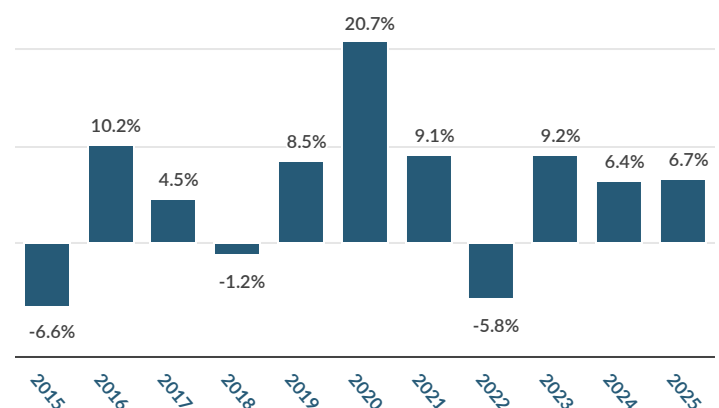
## COMPOUND RETURNS – SERIES F

1 Month	3 Months	YTD	1 Year	3 Year (Annualized)	5 Year (Annualized)	10 Year (Annualized)	Since Inception (Annualized)
0.0%	0.6%	6.7%	6.7%	7.4%	4.9%	6.6%	5.3%

## FUND FACTS

Inception Date	December 30, 2014
Currency	USD
Fund AUM	\$346.1 Million
NAVPU	\$11.00
Management Fee	0.75%
MER as of June 30, 2025 (unaudited) <sup>2</sup>	0.93%
Minimum Initial Investment	\$500
Minimum Subsequent Investment	\$100
Liquidity	Daily
RSP Eligible	Yes

## CALENDAR YEAR RETURNS – SERIES F



## Lysander-Canso U.S. Corporate Value Bond Fund (USD) – Series F

### TOP 10 HOLDINGS

Security	% of Fund	Rating <sup>3</sup>
US Treasury 4.25% Aug 15, 2035 (USD)	23.3%	AA+
US Treasury 3.875% Aug 15, 2033 (USD)	10.2%	AAA
UBS Group AG 3.091% May 14, 2031/32 144A (USD)	6.6%	A-
Delta Airlines Inc. 4.75% Oct 20, 2028 144A (USD)	6.0%	A-
JP Morgan Chase & Co FF 2.956% May 13, 2030/31 (USD)	5.2%	A
New York Life Global FDG 5% Jan 9, 2034 144A (USD)	4.7%	AA+
Air Canada 4.625% Aug 15, 2029	3.7%	BB+
American Honda Finance 4.4% Sep 5, 2029 (USD)	3.1%	A-
TD Bank Sr. Unsec. 4.808% Jun 3, 2030 (USD)	2.7%	A
Lloyds Banking Group PLC 5.087% Nov 26, 2028 (USD)	2.6%	A-
<b>Total</b>	<b>68.1%</b>	

### DISTRIBUTIONS

**Distribution Frequency:** Quarterly

**Most Recent Distribution per Unit:** \$0.2865

**12-Month Trailing Distribution Yield:** 5.0%

**Next Record Date:** March 19, 2026

**Next Distribution Date:** March 20, 2026

Distributions (\$)/Unit <sup>4</sup>	YTD <sup>*</sup>	2024	2023	2022	2021	2020	2019	2018	2017	2016	2015
Total Distributions	0.5461	0.7442	0.4795	0.7138	0.7042	0.3369	0.2665	0.2215	0.2287	0.4170	0.3464
Interest	–	0.3127	0.4121	0.3473	0.2519	0.3264	0.2665	0.2215	0.2290	0.4170	0.2474
Dividends	–	0.0126	0.0243	0.0237	0.0318	0.0105	–	–	–	–	–
Capital Gains	–	0.4192	0.0432	0.3428	0.4208	–	–	–	–	–	0.0990
Withholding Tax	–	(0.0003)	–	–	(0.0002)	–	–	–	(0.0003)	–	–

<sup>\*</sup>The final tax character will be determined based on the Fund's tax year end information.

### PORTFOLIO CHARACTERISTICS

Number of Securities	66
Number of Issuers	36
Average Term to Maturity (Years)	6.0
Average Duration (Years)	4.5
Average Coupon (%)	4.4%
Yield to Maturity (%)	5.5%
Current Yield (%)	4.5%
Average Credit Quality <sup>3</sup>	A

### CREDIT QUALITY BREAKDOWN

AA & Higher	46.1%
A	31.0%
BBB	9.0%
BB & Lower	12.8%
Not Rated	1.1%

### GEOGRAPHIC BREAKDOWN

Canada	21.4%
USA	69.3%
Europe	9.3%

Lysander Funds Limited is the investment fund manager of Lysander-Canso U.S. Corporate Value Bond Fund (USD) (the "Fund"). This document is not an invitation to invest in the Fund and does not constitute a public offering of sale. Purchases in the Fund can only be made through an investment professional on the terms in the Fund's offering document by eligible investors. Each purchaser of units in a fund may have statutory or contractual right of action. Please read the prospectus before investing. Commissions, trailing commissions, management fees and expenses all may be associated with investment funds.

The indicated rates of return are historical annual compounded total returns including changes in unit value and reinvestment of all distributions and do not take into account sales, redemption, distribution or optional charges or income taxes payable by any securityholder that would have reduced returns. Investment funds are not guaranteed or insured, their values change frequently and past performance may not be repeated.

<sup>1</sup>Any unauthorized use or disclosure is prohibited. Nothing herein should in any way be deemed to alter the legal rights and obligations contained in agreements between any ICE Data Services entity ("ICE") and their clients relating to any of the Indices or products or services described herein. The information provided by ICE and contained herein is subject to change without notice and does not constitute any form of representation or undertaking. ICE and its affiliates make no warranties whatsoever either express or implied as to merchantability fitness for a particular purpose or any other matter in connection with the information provided. Without limiting the foregoing ICE and its affiliates makes no representation or warranty that any information provided hereunder are complete or free from errors omissions or defects. All information provided by ICE is owned by or licensed to ICE. ICE retains exclusive ownership of the ICE Indices including the ICE BofA Indexes and the analytics used to create this analysis ICE may in its absolute discretion and without prior notice revise or terminate the ICE information Indices and analytics at any time. The information in this analysis is for internal use only and redistribution of this information to third parties is expressly prohibited. Neither the analysis nor the information contained therein constitutes investment advice or an offer or an invitation to make an offer to buy or sell any securities or any options futures or other derivatives related to such securities. The information and calculations contained in this analysis have been obtained from a variety of sources including those other than ICE and ICE does not guarantee their accuracy. Prior to relying on any ICE information and/or the execution of a security trade based upon such ICE information, you are advised to consult with your broker or other financial representative to verify pricing information. There is no assurance that hypothetical results will be equal to actual performance under any market conditions. THE ICE INFORMATION IS PROVIDED TO THE USERS "AS IS." NEITHER ICE NOR ITS AFFILIATES NOR ANY THIRD PARTY DATA PROVIDER WILL BE LIABLE TO ANY USER OR ANYONE ELSE FOR ANY INTERRUPTION, INACCURACY, ERROR OR OMISSION, REGARDLESS OF CAUSE IN THE ICE INFORMATION OR FOR ANY DAMAGES RESULTING THEREFROM. In no event shall ICE or any of its affiliates, employees, officers, directors or agents of any such persons have any liability to any person or entity relating to or arising out of this information analysis or the indices contained herein.

<sup>2</sup>The management expense ratio ("MER") is based on the total expenses of the period mentioned, including the Fund's proportionate share of the MER, if any, of any underlying fund in which the Fund has invested, and is expressed as an annualized percentage of daily average net asset value during the period. If the Fund invests in an underlying fund where Lysander Funds Limited is the investment fund manager, no management fees are payable by the Fund that would duplicate a fee payable by the underlying fund.

<sup>3</sup>Fixed income securities unrated by external agencies are assigned an internal Canso rating.

<sup>4</sup>Distributions are based on the actual number of units outstanding at the relevant time. Distributions are paid in cash or reinvested in additional units of the Fund. If the Fund's series' net income/capital gains is less than the amounts distributed in the year, the distribution will include a return of capital. In these circumstances, if an investor elects to receive their distributions in cash and not reinvest such distributions, it is expected that the value of their investment will decline over time. Distributions are not an indication of performance, rate of return or yield.

### LSEG Lipper Fund Awards Canada 2025

Lysander-Canso U.S. Corporate Value Bond Fund (USD) (Series F) was named Best Global Corporate Fixed Income Fund for: (i) 5 years ending July 31, 2025, out of a classification total of 20 funds (5 years) and (ii) 10 years ending July 31, 2025, out of a classification total of 11 funds (10 years). The corresponding LSEG Lipper Leader for Consistent Return ratings of the fund for the period ended July 31, 2025 were: N/A (1 year), 5 (3 years), 5 (5 years) and 5 (10 years). Performance for the fund (Series F) for the period ended December 31, 2025 was 6.7% (1 year), 7.4% (3 years), 4.9% (5 years) and 6.6% (10 years).

The LSEG Lipper Fund Awards Canada, granted annually, highlight funds and fund companies that have excelled in delivering consistently strong risk-adjusted performance relative to their peers. The LSEG Lipper Fund Awards are based on the Lipper Leader for Consistent Return rating, which is a risk-adjusted performance measure calculated over 36, 60 and 120 months. The fund with the highest Lipper Leader for Consistent Return (Effective Return) value in each eligible classification wins the LSEG Lipper Fund Award. For more information, see [lipperfundawards.com](http://lipperfundawards.com). Although LSEG makes reasonable efforts to ensure the accuracy and reliability of the data contained herein, their accuracy is not guaranteed by LSEG Lipper. Note: The Lipper Leader Ratings for each fund are subject to change every month.

LSEG Lipper Fund Awards, ©2026 LSEG. All rights reserved. Used under license.

®Lysander Funds is a registered trademark of Lysander Funds Limited.

Lysander Funds Ltd., 3080 Yonge St., Suite 4000, Toronto, ON, M4N 3N1

Toll Free: (877) 308-6979 Website: [www.lysanderfunds.com](http://www.lysanderfunds.com)

