

Lysander-Canso Balanced Fund – Series F

Fund Code: LYZ800F  
Portfolio Manager: Canso Investment Counsel Ltd.  
As of: July 31, 2025  
Asset Class: Balanced  
CIFSC Category: Global Equity Balanced  
Benchmark: 50% FTSE Canada All Corporate Bond Index and 50% MSCI All Country World (CAD) Index<sup>1</sup>



FUNDGRADE A+<sup>®</sup>  
ACHIEVED FOR THE YEAR 2024

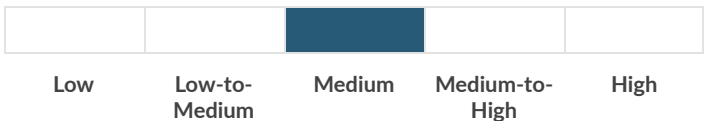
Investment Focus

The Fund seeks to provide capital growth while moderating equity volatility by investing in a diversified portfolio of equities and bonds. It is unrestricted in both credit quality and geographic allocation.

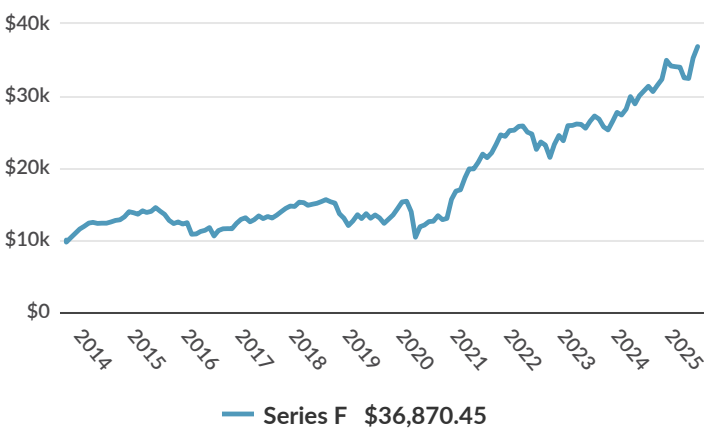
FUND FACTS

Inception Date	December 23, 2011
Currency	CAD
Fund AUM	\$177.7 Million
NAVPU	\$25.44
Management Fee	0.75%
MER as of June 30, 2025 (unaudited)	0.93%
Minimum Initial Investment	\$500
Minimum Subsequent Investment	\$100
Liquidity	Daily
RSP Eligible	Yes

Risk Rating



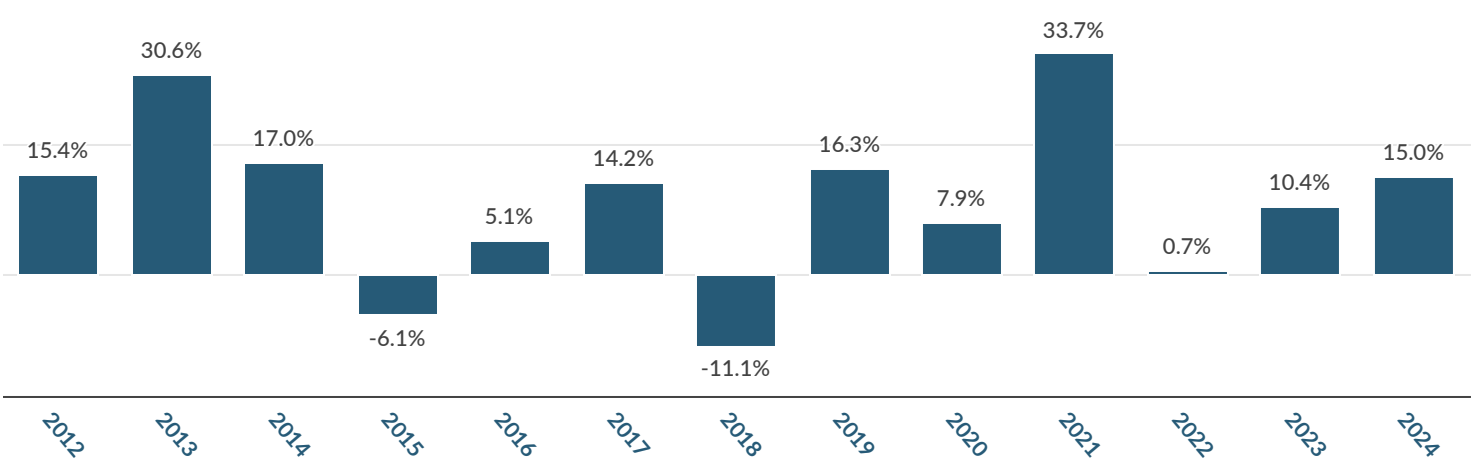
GROWTH OF \$10,000 SINCE INCEPTION DATE<sup>2</sup>



COMPOUND RETURNS – SERIES F

1 Month	3 Months	YTD	1 Year	3 Year (Annualized)	5 Year (Annualized)	10 Year (Annualized)	Since Inception (Annualized)
1.6%	7.4%	8.1%	13.8%	12.8%	17.6%	8.8%	11.0%

CALENDAR YEAR RETURNS – SERIES F



## Lysander-Canso Balanced Fund – Series F

### Equity

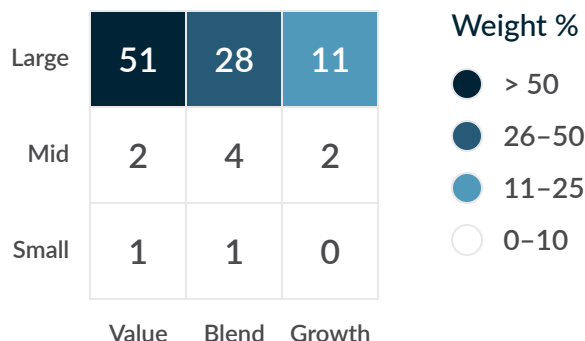
#### TOP 10 HOLDINGS

Security	% of Fund
Commerzbank AG – ORD	2.1%
AtkinsRealis Group Inc	2.0%
UniCredit S.p.A	1.9%
Manulife Financial Corp.	1.8%
Bird Construction Inc.	1.8%
Spirit Aerosystems Holdings Inc.	1.8%
Air Canada	1.7%
MDA Space Ltd	1.7%
The Boeing Company	1.6%
BT Group PLC	1.5%
<b>Total</b>	<b>17.9%</b>

#### PORTFOLIO CHARACTERISTICS

Number of Securities	43
Dividend Yield (%)	1.4%
Price to earnings ratio (forward) <sup>5</sup>	11.8
Price to book ratio <sup>6</sup>	1.8
Weighted avg. market capitalization <sup>7</sup>	\$23.1 Billion

#### EQUITY STYLE<sup>8</sup>



### Fixed Income

#### TOP 10 HOLDINGS

Security	% of Fund	Rating
Canada 0.25% Mar 1, 2026	10.8%	AAA
TD Bank NHA MBS (98101784) FRN Jun 1, 2030 (CORRA +49)	8.1%	AAA
Canada 0.5% Dec 1, 2030	7.7%	AAA
Scotia Capital Inc. NHA MBS (97528147) 3.7% Mar 1, 2029	2.5%	AAA
MetLife Global Funding I 4.149% Jun 6, 2033	2.1%	AA-
Canada RRB 4.0% Dec 1, 2031	1.8%	AAA
Hydro Ottawa Capital 4.372% Jan 30, 2035	1.7%	A-
Union Gas Ltd. 4.2% Jun 2, 2044	1.6%	A-
TD Bank Sr. Unsec. 4.133% Jan 9, 2032/33	1.2%	A
Toyota Credit Canada Inc 4.33% Jan 24, 2028	1.1%	A+
<b>Total</b>	<b>38.6%</b>	

#### PORTFOLIO CHARACTERISTICS

Number of Securities	91
Number of Issuers	91
Average Term to Maturity (Years)	6.4
Average Duration (Years)	4.1
Average Coupon (%)	3.0%
Yield to Maturity (%)	3.9%
Current Yield (%)	3.0%
Average Credit Quality <sup>3</sup>	AA

#### CREDIT QUALITY BREAKDOWN

AA & Higher	67.8%
A	18.2%
BBB	9.4%
BB & Lower	4.5%
Not Rated	0.1%

## Lysander-Canso Balanced Fund – Series F

### GEOGRAPHIC BREAKDOWN

Canada	74.6%
USA	19.8%
Europe	5.6%

### ASSET MIX

Canadian Equity	17.9%
Canadian Fixed Income	56.1%
Cash & Equivalents	0.8%
European Equity	6.8%
Foreign Fixed Income	5.3%
US Equity	13.1%

### SECTOR - EQUITY

Consumer Staples	7.6%
Energy	6.7%
Communication Services	15.5%
Financials	18.7%
Consumer Discretionary	17.2%
Industrials	30.9%
Information Technology	3.2%
Materials	0.2%

### SECTOR - FIXED INCOME

Consumer Staples	5.4%
Energy	6.1%
Communication Services	2.4%
Financials	36.3%
Consumer Discretionary	6.3%
Industrials	0.7%
Government	34.8%
Utilities	8.0%

### DISTRIBUTIONS

Distribution Frequency: Quarterly

Most Recent Distribution per Unit: \$0.1148

12-Month Trailing Distribution Yield: 2.0%

Next Record Date: September 18, 2025

Next Distribution Date: September 19, 2025

Distributions (\$)/Unit <sup>4</sup>	YTD <sup>*</sup>	2024	2023	2022	2021	2020	2019	2018	2017	2016	2015
Total Distributions	0.2020	0.4347	0.3543	1.3427	3.5081	0.2335	0.3572	1.4407	0.1465	0.7799	0.9180
Interest	–	0.0171	0.0961	0.0183	0.0061	0.0374	0.0484	0.0136	–	0.0005	–
Dividends	–	0.2255	0.2713	0.3423	0.1915	0.2075	0.3361	0.1956	0.1336	0.1250	0.0265
Capital Gains	–	0.2057	–	0.9920	3.3196	–	–	1.2376	0.0129	0.6553	0.8915
Withholding Tax	–	(0.0137)	(0.0131)	(0.0098)	(0.0091)	(0.0114)	(0.0273)	(0.0062)	–	(0.0009)	–

<sup>\*</sup>The final tax character will be determined based on the Fund's tax year end information.

Lysander Funds Limited is the investment fund manager of Lysander-Canso Balanced Fund (the “Fund”). This document is not an invitation to invest in the Fund and does not constitute a public offering of sale. Purchases in the Fund can only be made through an investment professional on the terms in the Fund’s offering document by eligible investors. Each purchaser of units in a fund may have statutory or contractual right of action. Please read the prospectus before investing. Commissions, trailing commissions, management fees and expenses all may be associated with investment funds.

The indicated rates of return are historical annual compounded total returns including changes in unit value and reinvestment of all distributions and do not take into account sales, redemption, distribution or optional charges or income taxes payable by any securityholder that would have reduced returns. Investment funds are not guaranteed or insured, their values change frequently and past performance may not be repeated.

<sup>1</sup> Copyright © 2025 FTSE Global Debt Capital Markets Inc. All rights reserved. FTSE Global Debt Capital Markets Inc (“FTDCM”), FTSE International Limited (“FTSE”) or the London Stock Exchange Group companies (the “Exchange” and, together with FTDCM and FTSE, the “Licensor Parties”). The Licensor Parties make no warranty or representation whatsoever, expressly or impliedly, either as to the results to be obtained from the use of the FTSE Canada Indices (the “Indices”) and/or the figure at which the said Indices stand at any particular time on any particular day or otherwise. The Indices are compiled and calculated by FTDCM and all copyright in the Indices values and constituent lists vests in FTDCM. The Licensor Parties shall not be liable (whether in negligence or otherwise) to any person for any error in the Indices and the Licensor Parties shall not be under any obligation to advise any person of any error therein. “FTSE®” is a trade mark of the London Stock Exchange Group companies and is used by FTDCM under licence. “FTSE®” is a trade mark of the FTSE International Limited and is used by FTDCM under license. Source: MSCI. The MSCI information may only be used for your internal use, may not be reproduced or disseminated in any form and may not be used as a basis for or a component of any financial instruments or products or indices. None of the MSCI information is intended to constitute investment advice or a recommendation to make (or refrain from making) any kind of investment decision and may not be relied on as such. Historical data and analysis should not be taken as an indication or guarantee of any future performance analysis, forecast or prediction. The MSCI information is provided on an “as is” basis and the user of this information assumes the entire risk of any use made of this information. MSCI, each of its affiliates and each other person involved in or related to compiling, computing or creating any MSCI information (collectively, the “MSCI Parties”) expressly disclaims all warranties (including, without limitation, any warranties of originality, accuracy, completeness, timeliness, non-infringement, merchantability and fitness for a particular purpose) with respect to this information. Without limiting any of the foregoing, in no event shall any MSCI Party have any liability for any direct, indirect, special, incidental, punitive, consequential (including, without limitation, lost profits) or any other damages. (www.msci.com).

<sup>2</sup> Growth of \$10K chart shown represents a hypothetical investment of the Fund since inception. The chart assumes reinvestment of all distributions and is net of fees. The rate of return shown is used only to illustrate the effects of the compound growth rate and is not intended to reflect future values or return on investments.

<sup>3</sup> Fixed income securities unrated by external agencies are assigned an internal Canso rating for Average Credit Quality.

<sup>4</sup> Distributions are based on the actual number of units outstanding at the relevant time. Distributions are paid in cash or reinvested in additional units of the Fund. If the Fund’s series’ net income/capital gains is less than the amounts distributed in the year, the distribution will include a return of capital. In these circumstances, if an investor elects to receive their distributions in cash and not reinvest such distributions, it is expected that the value of their investment will decline over time. Distributions are not an indication of performance, rate of return or yield.

<sup>5</sup> A financial ratio calculated as weighted average of current share price divided by forecasted earning per share of all stocks in the portfolio. A fund’s price to earning ratio can act as a gauge of the fund’s investment strategy in the current market climate, and whether it has a value or a growth orientation. Companies with a surge of popularity tend to have higher price-to-earnings ratios, reflecting a growth orientation, while lower price-to-earnings ratios reflect a value orientation.

<sup>6</sup> A financial ratio calculated as weighted average of current share price divided by book value per share of all stocks in the portfolio. It compares how the market values a company to the value on the company’s books. For example a company trading at several times its book value tends to indicate a growth stock where investors believe the book value will rise in the future. Typically a company with a low price-to-book ratio means that investors think that the firm’s assets have been too highly valued on its financial statements.

<sup>7</sup> The weighted average market capitalization of a fund’s equity portfolio gives you a measure of the weighted average size of the companies in which the fund invests. Market capitalization is calculated by multiplying the number of a company’s shares outstanding by its price per share.

<sup>8</sup> The Morningstar Equity Style Box<sup>TM</sup> is a nine square grid that illustrates the investment style of a security. Morningstar information contained herein is proprietary to Morningstar and is not warranted to be accurate, complete or timely. Neither

## Lysander-Canso Balanced Fund – Series F

---

Morningstar nor its content providers are responsible for any damages or losses arising from any use of this information. © 2025 Morningstar Research Inc.

© 2025 Morningstar. All Rights Reserved. The information contained herein: (1) is proprietary to Morningstar and/or its content providers; (2) may not be copied or distributed; and (3) is not warranted to be accurate, complete or timely. Neither Morningstar nor its content providers are responsible for any damages or losses arising from any use of this information. Past performance is no guarantee of future results.

Lysander-Canso Balanced Fund was awarded the 2024 Fundata FundGrade A+® Award in the Global Equity Balanced Category, out of 187 funds. The FundGrade start date was 12/31/2014 and FundGrade end date was 12/31/2024. Performance for the fund (Series A) for the period ended July 31, 2025 was 12.8% (1 year), 11.9% (3 years), 16.6% (5 years) and 7.9% (10 years).

FundGrade A+® is used with permission from Fundata Canada Inc., all rights reserved. The annual FundGrade A+® Awards are presented by Fundata Canada Inc. to recognize the “best of the best” among Canadian investment funds. The FundGrade A+® calculation is supplemental to the monthly FundGrade ratings and is calculated at the end of each calendar year. The FundGrade rating system evaluates funds based on their risk-adjusted performance, measured by Sharpe Ratio, Sortino Ratio, and Information Ratio. The score for each ratio is calculated individually, covering all time periods from 2 to 10 years. The scores are then weighted equally in calculating a monthly FundGrade. The top 10% of funds earn an A Grade; the next 20% of funds earn a B Grade; the next 40% of funds earn a C Grade; the next 20% of funds receive a D Grade; and the lowest 10% of funds receive an E Grade. To be eligible, a fund must have received a FundGrade rating every month in the previous year. The FundGrade A+® uses a GPA-style calculation, where each monthly FundGrade from “A” to “E” receives a score from 4 to 0, respectively. A fund’s average score for the year determines its GPA. Any fund with a GPA of 3.5 or greater is awarded a FundGrade A+® Award. For more information, see [www.FundGradeAwards.com](http://www.FundGradeAwards.com). Although Fundata makes every effort to ensure the accuracy and reliability of the data contained herein, the accuracy is not guaranteed by Fundata. Note: The FundGrade ratings for each fund are subject to change every month.

®Lysander Funds is a registered trademark of Lysander Funds Limited.

---

Lysander Funds Ltd., 3080 Yonge St., Suite 4000, Toronto, ON, M4N 3N1

Toll Free: (877) 308-6979 Website: [www.lysanderfunds.com](http://www.lysanderfunds.com)

